

SIMSAnywhere Synchronization Service (SASS) QuickStart Guide

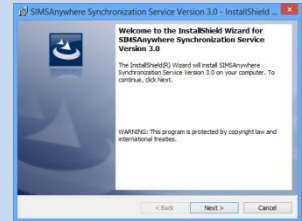
1. Download the installation package

The latest version of the SIMSAnywhere Synchronization Service (SASS) installer is available for download from:



<http://www.flantech.net/Products/SIMSAnywhere#Download>


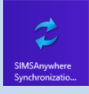
2. Install

- Open/Run the installation package you downloaded in step 1.
- Follow the on-screen prompts until installation has completed, then click *Finish*.

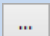


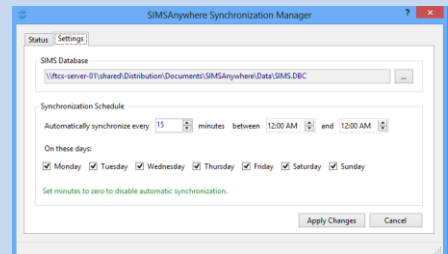
3. Open SIMSAnywhere Synchronization Manager (SASM)

Windows 7: Click the Windows Start button , select *All Programs*, then *SIMS*, then click  *SIMSAnywhere Synchronization Manager*.

Windows 8: Click the Windows key  on your keyboard, then locate and click the  tile from the Windows Start screen.

4. Configure Settings

- Select the *Settings* tab of the SIMSAnywhere Synchronization Manager window.
- Click the  button to locate and select your SIMS database.
- If you want the synchronization service (SASS) to automatically synchronize your data, enter a synchronization frequency and select the days of the week on which synchronization should occur.
- Click *Apply Changes* to save your settings. After you click, you may be prompted to enter the user name and password of a SIMS administrator account. You may also be prompted to change the log on settings of the synchronization service. If you need help responding to either of these prompts, please consult the [Installation Guide for SASS and SASM](#) for instructions.



5. Synchronize

- Select the *Status* tab of the SIMSAnywhere Synchronization Manager window.
- Click the *Sync Now* button to begin synchronizing your databases.

Additional Resources

Additional documentation can be found on our website at:

<http://www.flantech.net/Products/SIMSAnywhere#Documentation>

For detailed instructions on installing and configuring SASS or SASM, please consult the *Installation Guide for SASS and SASM*.

For instructions on preparing your SIMS database for use with SIMSAnywhere, please consult the *SIMSAnywhere User Guide*.